

IFWTWA's June in Rockland, Maine

Sponsored by Historic Inns of Rockland, ME

June 6 – Thursday, June 10, 2010

Preliminary schedule and subject to change.

Sunday, June 6, 2010 Travel Day

Transportation must be provided on your own to Rockland. A shuttle will be available from the Portland Jetport (fee is the responsibility of IFWTWA members), however, each attendee must schedule his or her own transportation to Rockland.

Regularly, airport transportation from Rockland to Portland Jetport is \$85 each way. However, for this trip, the Historic Inns of Rockland have arranged for a service to offer it at \$60 each way or \$100 round trip (+ gratuities) per person.



In the event of weather issues, each member will be responsible for rescheduling their own transportation. Should cancellations occur, lodging may be available for an additional day due to inclement weather, but can not be guaranteed. Every effort will be made to accommodate any members due to transportation problems. For those who arrive early on Sunday, there will be activities. You will have an unbelievable number of story angles.



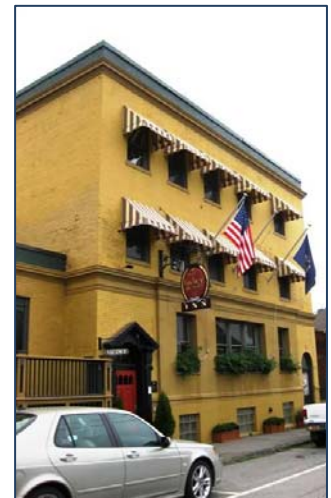
Monday, June 7, 2010

Scheduled Activities - morning

- Visit the Maine Lighthouse Museum and see the largest collection of lighthouse artifacts in the country. Guided tours by docents available.
- Learn all about the infamous Maine Puffins at the Audubon Puffin Information Center.
- Inn to Inn Progressive Lunch and historic trolley tour of Rockland. A four-course progressive lunch with one course at each inn. Tour the Historic Inns of Rockland and learn the stories behind these captivating inns.

Optional Activities

- Explore Main Street Shops & Galleries, set up interviews.
- Sail on a historic schooner aboard the Bugeye Jenny Norman or the Morning in Maine.
- Tour the new Rail & Sail Museum.
- Enjoy an Oyster/Beer Tasting (Amafi/Oyster Farms)
- Learn all about the lore and lure of the lobster from Captain Jack's Lobster Adventure. You'll pull traps and leave with more lobster trivia than you could ever imagine. (only 6 per trip)
- Sign up for optional Spa treatments on Tuesday or Thursday at a reduced cost.



Scheduled Activities - evening

Enjoy a Taste of Rockland at Rustica with a brief intro to Main Street Maine Food by Rockland's restaurants including Café Miranda, Amalfi, In Good Company, Lily Bistro and more, and hosted by Rockland Main Street, Inc. Bread/Desserts provided by Pastry Garden Atlantic Baking, Coffee Bar provided by Coffee: Rock City Roasters and Beverages provided by Cold River Vodka, Local Cellar Door Winery and more.



Tuesday, June 8, 2010

Scheduled Activities - morning

- Take the trolley to Owl's Head and tour the Owl's Head Transportation Museum's fabulous collection of planes, trains and automobiles.
- Enjoy scenic biplane and Model T rides
- Lunch in Owl's Head.

Optional Activities - afternoon

- Explore Main Street Shops & Galleries, set up interviews.

- Sail on a historic schooner aboard the Bugeye Jenny Norman or the Morning in Maine.
- Tour the new Rail & Sail Museum.
- Learn all about the lore and lure of the lobster from Captain Jack's Lobster Adventure. You'll pull traps and leave with more lobster trivia than you could ever imagine. (Only 6 per trip).
- Take a guided and narrated lighthouse tour via trolley or boat.
- Tour Farmers Fare in Rockport.
- Tour Rheal Green Day Spa.

Scheduled Activities - evening

Sign up in advance for dinners at local restaurants including: Amalfi, Lily, Rustica, Café Miranda, and In Good Company. You'll dine with fellow travel writers, hosted by Rockland's restaurants.



Wednesday, June 9, 2010

Scheduled Activities - morning

- Tour the renowned Farnsworth Art Center, Andrew Wyeth Center and Lucy Farnsworth Homestead.
- Enjoy a garden tour at Rockland's renowned Primo's Restaurant
- Enjoy an old fashioned Wass's hot dog, from Wass's, a Rockland institution who's served over 2 million hotdogs.



Optional Activities

- Explore Main Street Shops & Galleries, set up interviews.
- Experience the All Aboard Trolley Wine Tour, a popular event among Rockland visitors.
- Tour Atlantic Challenge, a boat building apprenticeship.
- Partake in a Wine Tasting at the Wine Seller, Rockland's renowned wine and beer shoppe.

- Learn all about the lore and lure of the lobster from Captain Jack's Lobster Adventure. You'll pull traps and leave with more lobster trivia than you could ever imagine. (only 6 per trip).
- AIR (Art In Rockland) hosts Gallery Night, when galleries stay open late.

Scheduled Activities - evening

Board the Trolley for Port Clyde and the chance for a Lobster 101 Lesson.

Tour a Lobster Pound & Processing plant with Maine Lobster Processors. Enjoy a lobster dinner aboard the Monhegan Boat Lines. Enjoy a sunset cruise taking you past gorgeous islands, including the Andrew Wyeth compound. Join the PR Partners to learn more about participating Rockland businesses. Appetizers provided by local restaurants. Wines provided by local vineyards.

Thursday, June 10, 2010 – travel day

Scheduled Activities - morning

- Experience the Rockland Farmers Market
- Go back and spend more time at places you'd like to see again.
- To-go box lunch or farewell lunch will be offered

There is a limit of 12 rooms and a maximum of 24 guests. The host has the final approval of who will attend after they review applications. Have your online profile up to date.

Afternoons have been left optional, with numerous activities to sign up for or simply to explore Rockland. All of the optional tours will require advance sign-up based on space. That will be addressed after application approval.

This is a busy time of year for Rockland. Please, do not request arriving a day early or staying an extra day. If you want to explore more of Maine, this is a wonderful spot to start or end your journey. Marti Mayne, the media contact may be able to help arrange tours of additional Maine Coastal areas if you are interested. The inns will be full on the weekends before and after our trip.

